

PRODUCT:

QUANTITY:

ITEM:

Designed Smart

- CFW-1 (without drain) CFW-1D (with drain)
- CFW-43 (without drain) CFW-43D (with drain)

Bid Specifications

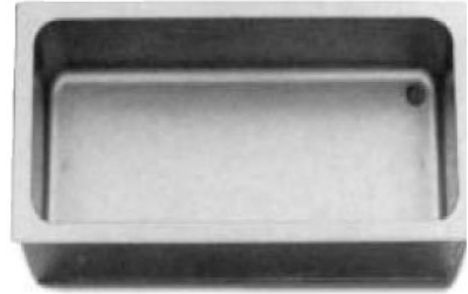
Heavy-duty top mount Cold Food Well is constructed

of deep-drawn austenite stainless steel. The aluminized outer housing is fully insulated on the sides and bottom. APW Wyott E-Z Locks make installation quick and easy.

Unit shipped with drain are provided with stainless steel NPT drain welded to bottom of pan and provided with removable screen.

APW Wyott Design Features

- Stainless steel well pans – One-piece, die-stamped.
- Outer housing – Aluminized. Fully insulated sides and bottom.
- Multiple units can be installed in same table or counter.
- Compact housing – overall depth 7 3/4".



Model: CFW-1

Options

- Drain kit and shut-off valve (incl. 1/2" PVC and 3 ft. (91.4cm) of high temperature flexible hose. (56420)

Reliability backed by APW Wyott's Warranty

APW Wyott Drop-In Cold Wells are backed by a 1-year parts and labor warranty, including on-site service calls within 50 miles of authorized service technicians.

Certified by the following agencies:



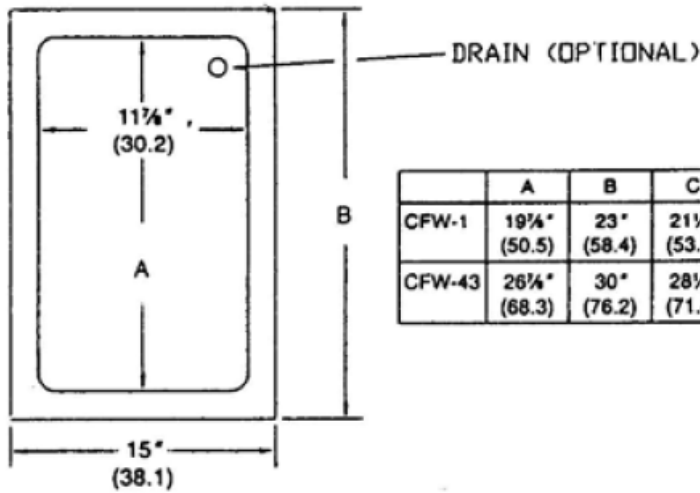
See reverse side for product specifications.

Models □ CFW-1 □ CFW-43 ("D": after model # designates drain)

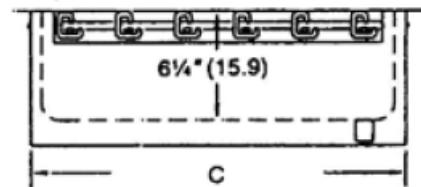
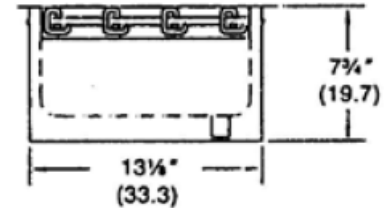
PRODUCT:

QUANTITY:

ITEM:



	A	B	C
CFW-1	19 1/4" (50.5)	23" (58.4)	21 1/4" (53.7)
CFW-43	26 1/4" (68.3)	30" (76.2)	28 1/4" (71.4)



(Centimeters in Parenthesis)

Model	Outside Dimensions (W x L x D)	Inside Dimensions (W x L x D)	Cutout (W x L)	Flange	Shipping Weight
CFW-1	15" x 23" x 7 3/4" (36.1 x 58.4 x 19.7cm)	11 7/8" x 19 7/8" x 6 1/4" (30.2 x 50.5 x 15.9cm)	13 3/4" x 21 3/4" (34.7 x 55cm)	1 9/16" (3.9cm)	24 lbs. (10.8kg)
CFW-43	15" x 30" x 7 3/4" (36.1 x 76.2 x 19.7cm)	11 7/8" x 26 3/4" x 6 1/4" (30.2 x 68.2 x 15.9cm)	13 3/4" x 28 5/8" (34.7 x 72.4cm)	1 9/16" (3.9cm)	29 lbs. (13kg)

Drain Standard With Model No's:

CFW-1D

CFW-43D

Drain Location: 1 11/16" x 1 11/16" from back right corner.

Drain Couplings: 1/2" NPT Stainless 1 1/2" Long

Drain Kit: Drain kit for all wells includes 1/2" PVC and 3 ft. of high temperature flexible hose.
Stock # 56420. Ship Wt. 2lbs.

*APW Wyott reserves the right to modify specifications or discontinue models without incurring obligation.