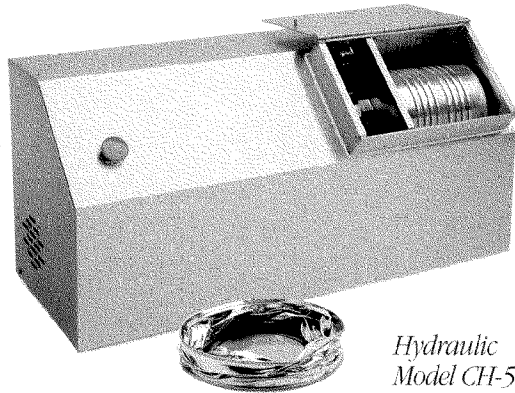
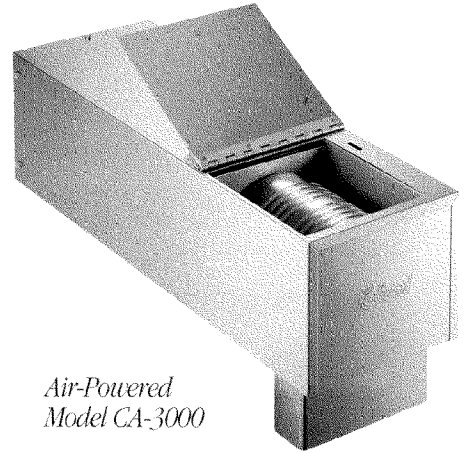




# Can Crushers



*Hydraulic  
Model CH-5000*

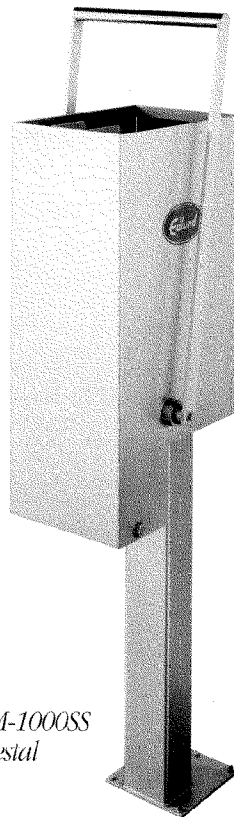


*Air-Powered  
Model CA-3000*

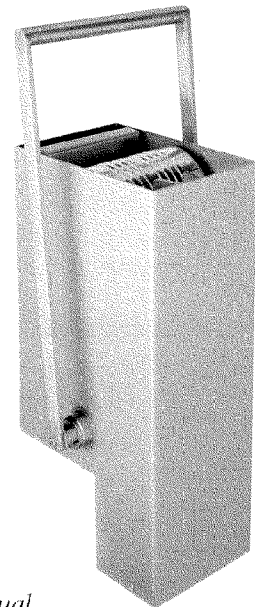
Now, you can save on your growing trash collection charges with the Edlund Can Crushers. These can crushers reduce the size of all your cans up to 85%. So you can fit six times more cans in your dumpsters and recycling bins.

Whether you choose the hydraulic, air-powered, or manual models, you won't find an easier way to crush your cans.

All models are easy to operate, save labor and flatten open #10 cans and smaller sizes. Made in the U.S.A.



*Manual  
Model CM-1000SS  
with Pedestal*

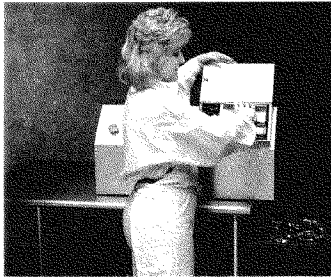


*Manual  
Model CM-1000SS  
Table Mount*

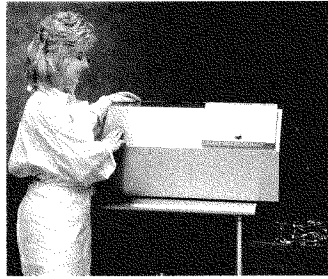


Foodservice's most recycled material.  
For more information on recycling steel cans call  
the Steel Recycling Institute at 800-876-7274.

# Our Can Crushers Flatten Trash Bills.



*Place empty can in chamber.*



*Close safety lid. Press button.*



*Crushed can falls into receptacle.*

## HYDRAULIC AND AIR-POWERED CRUSHER FEATURES:

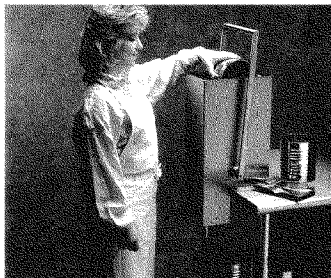
- Crushes up to ten #10 cans per minute.
- Reduces volume by 85% (6:1).
- Easy to operate.
- Labor saving - eliminates need to open can bottom before crushing.
- For added safety, chamber covers must be closed to activate.
- Can be used for #10 cans and other smaller sizes.
- Stainless steel cabinet and crusher box can be wiped down for easy cleaning.
- Sits on table top or counter.
- Maximum usage recommended: 1000 cans per day.
- Made in the U.S.A.

## SPECIFICATIONS:

Model Number	Product Code	Case Wt. Lbs.	Case Wt. Kg	Cubic Feet (ft <sup>3</sup> )	Cubic Meters (m <sup>3</sup> )
<b>ELECTRIC HYDRAULIC/115 VOLT 20 AMP CIRCUIT REQUIRED</b>					
CH-5000	78000	170	77.1	14.4	0.43
<b>AIR-POWERED/AIR PRESSURE: 85PSI - AIR CONSUMPTION 8-10 CFM</b>					
CA-3000	77000	95	29.5	3.0	0.07

## DIMENSIONS:

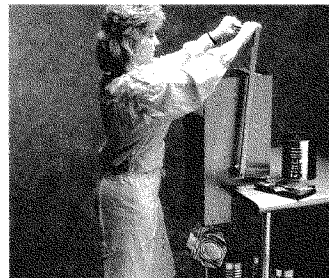
CH-5000	30" L x 16" H x 12" W 76.2 cm x 40.6 cm x 30.5 cm
CA-3000	26" L x 7 1/2" H x 9" W 66.1 cm x 19.1 cm x 22.9 cm



*Place empty can in chamber.*



*Pull the handle forward and down.  
(repeat for larger cans)*



*Return handle to upright position.  
Crushed can falls into receptacle.*

## MANUAL CRUSHER FEATURES:

- All stainless steel construction.
- Available in countertop and wall mounted models or with optional pedestal mounting base.

## SPECIFICATIONS:

Model Number	Product Code	Case Wt. Lbs.	Case Wt. Kg	Cubic Feet (ft <sup>3</sup> )	Cubic Meters (m <sup>3</sup> )
CM-1000SS	75100	65	29.3	2.7	0.08
CM-1000SSWM	75400	75	33.8	2.7	0.08
CM-1000PBSS	75300	40	18.0	1.3	0.04

**DIMENSIONS:** 32" H w/handle up x 12" W x 12" D  
81.3 cm H w/handle up x 30.5 cm W x 30.5 cm D



**Edlund** *Products for Foodservice*

Edlund Company, Inc., 159 Industrial Parkway, Burlington, VT 05401 802-862-9661 [www.edlundco.com](http://www.edlundco.com)

**WARRANTY INFORMATION:** THE EDLUND COMPANY WARRANTS THESE PRODUCTS TO BE FREE FROM DEFECTS IN MATERIAL AND WORKMANSHIP FOR A PERIOD OF ONE YEAR FROM DATE OF PURCHASE. THE COMPANY'S OBLIGATION UNDER THIS WARRANTY IS LIMITED TO REPAIRING OR REPLACING WITHOUT CHARGE ANY PART OR PARTS FOUND TO BE DEFECTIVE UNDER NORMAL USE. IT IS THE RESPONSIBILITY OF THE PURCHASER TO RETURN THE ENTIRE UNIT TO THE FACTORY. TRANSPORTATION CHARGES PREPAID. NO OTHER WARRANTY, WRITTEN OR VERBAL, IS AUTHORIZED BY THE COMPANY. WARRANTY INFORMATION OUTSIDE THE UNITED STATES MAY VARY. CONSULT YOUR DISTRIBUTOR. 4-99 ED01-278