

32E Series - Endless Design Curved Glass - Single Duty - Red Meat



Model No.	Description	Length	Depth	Height	Voltage	Amps	HP/BTUs	Power Cord	Est. Ship Weight
SC-CMS32E-4C	Self Contained	50"	30.5"	50.5"	115	12.0	1/4	YES	500
SC-CMS32E-6C	Self Contained	74"	30.5"	50.5"	115	12.0	1/3	YES	710
SC-CMS32E-8C	Self Contained	98"	30.5"	50.5"	115	16.0	1/2	YES	940
R-CMS32E-4C	Remote	50"	30.5"	50.5"	115	1.4	1400	NO	460
R-CMS32E-6C	Remote	74"	30.5"	50.5"	115	2.2	2100	NO	660
R-CMS32E-8C	Remote	98"	30.5"	50.5"	115	2.8	2800	NO	910

MODEL NUMBER PREFIX - SC = Self Contained R = Remote
 MODEL NUMBER SUFFIX - W = White B = Black S = Stainless Steel LED = LED lighting
 • Cases are designed to operate at 75 degrees Fahrenheit and 55% relative humidity
 • Cases are equipped with drains; check your local building codes for connection requirements.
 • Specification subject to change without notice
 IF COLORS ARE MIXED AN ADDITIONAL CHARGE WILL APPLY



32E Series - Endless Design Curved Glass - Single Duty - Red Meat

Standard Specifications and Optional Features

CONSTRUCTION

- UL Classified to ANSI/NSF 7
- Foamed in place CFC free foam
- Thermal insulated front glass
- Heavy gauge steel super structure
- Single duty display
- Endless design allows for continuous line up
- Drain is included for cleaning

INTERIOR

- White, black, and stainless steel ends
- Stainless steel heavy gauge mezzanine shelf (2 rows)
- White aluminum floor-main deck shelves
- Air insulated baffle (prevents moisture from dripping into display area)

EXTERIOR

- Double pane rear removable doors
- Newly designed rear compression door jamb
- Removable front grille allows for cleaning
- Removable rear grille for easy servicing
- 1" removeable end panels
- 1" Front bumper

FINISHES

- White, black, and stainless steel front and ends
- Stainless steel mirror trim
- Stainless steel heavy gauge top - 20" W
- Rear of unit is stainless steel brush finish at top
- Bottom rear is designer white or glossy black

LIGHTING

- 1 row of lighting at top of unit

ELECTRICAL REQUIREMENTS

- 115V with powercord
- UL/CUL listed
- 115V-5AMP general purpose receptacle

REFRIGERATION

- Copevap system (eliminates need for condensate pan)
- R513A expansion valve system
- Gravity coil located at inside top of unit
- Humidity coil located at main deck (provides extra humidity)
- Self contained unit
- Automatic defrost electronically controlled (self contained units only)
- Electronically maintains constant temperatures
- Remotes available

OPTIONS

- Stainless steel, laminate, or paint
- Mirrored doors
- Stainless steel mezzanine shelf
- 2" Front bumper
- Door locks
- Digital thermometer
- Meat platters
- Red meat bulbs

Important Note:

All refrigerated cases are designed to operate in an environment of 75 degrees and 55% relative humidity. Product must be cooled before being displayed within the case.

DRAIN IS REQUIRED

32E Series - Endless Design Curved Glass - Single Duty - Red Meat

Model No.	SC R	SC-CMS32E-4C R-CMS32E-4C	SC-CMS32E-6C R-CMS32E-6C	SC-CMS32E-8C R-CMS32E-8C
Length with (2) ends		50"	74"	98"
Length without ends		48"	72"	96"
Height with ends		50.5"	50.5"	50.5"
Height without ends		50"	50"	50"
Depth with ends		30.5"	30.5"	30.5"
Depth without ends		30"	30"	30"
Endless design (Dimensions are +/- 1/4")		YES	YES	YES
Operating temperature		34°F to 36°F	34°F to 36°F	34°F to 36°F
Refrigerant (exp. valve)	SC	R513A	R513A	R513A
Refrigerant (exp. valve)	R	R407A	R407A	R407A
Compressor size HP	SC	1/4	1/3	1/2
Defrost per day (24 hours)	Air Defrost	1 per day	1 per day	1 per day
BTU's at +20°F Evap. Temp.	R	1400	2100	2800
Voltage	SC	115	115	115
Amperage	SC	6.6	9.7	12.4
Remote Voltage	R	115	115	115
Amperage, lights only	R	1.4	2.2	2.8
Cord and plug	SC R	YES NO	YES NO	YES NO
Exterior color		W, B, S	W, B, S	W, B, S
Interior color		W, B, S	W, B, S	W, B, S
Floors		W, B, S	W, B, S	W, B, S
# of top doors		2	2	4
Door size		20.8" x 23.5"	31.3" x 23.5"	20.8" x 23.5"
# of coils		2	2	2
Bottom storage		NO	NO	NO
Front glass		Curved	Curved	Curved
# of main deck shelves		2	3	4
Main deck size		23.625" x 25"	23.625" x 25"	23.625" x 25"
Cubic capacity		23	34.5	46
Mezzanine shelf, 1 row lighted		Optional	Optional	Optional
Shipping Info				
Height		55"	55"	55"
Depth		44"	44"	44"
Length		61"	87"	115"
Gross weight SC/R		470/430	680/630	910/860
Cubic feet		85	122	161

(ALL WHITE OR ALL BLACK, NO EXTRA CHARGE—IF COLORS ARE MIXED AN ADDITIONAL CHARGE WILL APPLY)

Prefix

SC = Self Contained
R = Remote

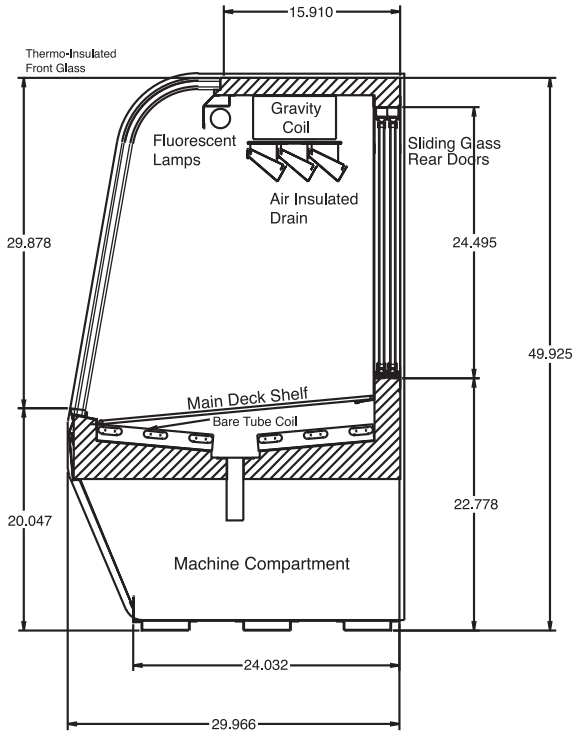
Suffix

B = Black
W = White
S = Stainless Steel
LED = LED lighting

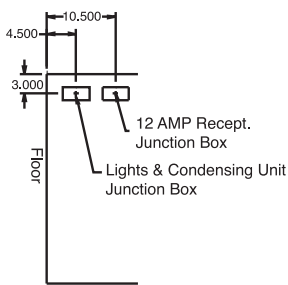
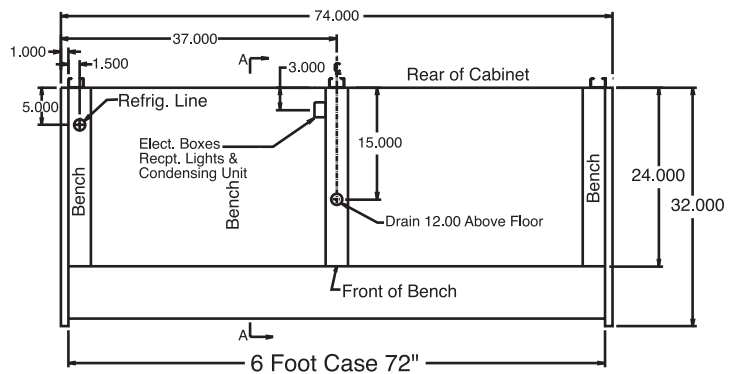
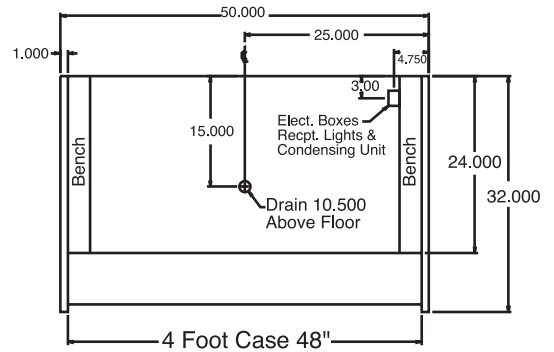
- Cases are designed to operate at 75 degrees Fahrenheit and 55% relative humidity
- Cases are equipped with drains; check your local building codes for connection requirements.
- Specification subject to change without notice

32E Series - Endless Design Curved Glass - Single Duty - Red Meat

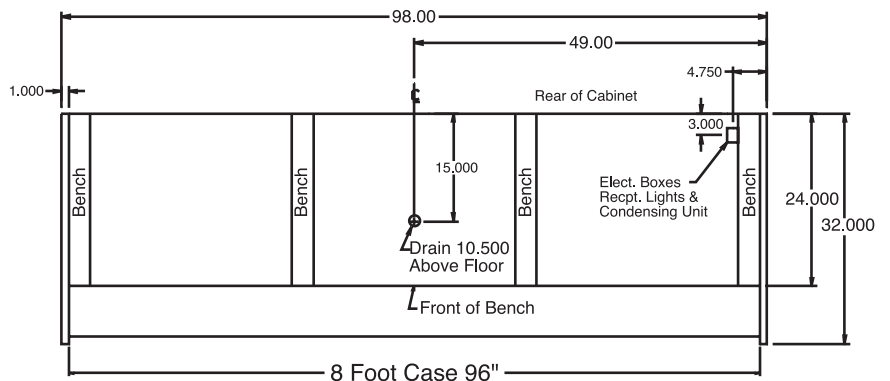
Technical Data • Side View • Plan View



Cross Section



Side View



Plan Views