

RIF Endless Design - Glass Door Reach In Freezers - 24" and 30" Doors



Model No.	Description	Length	Depth	Height	Voltage Fans/Def	Amps Fans/Def 3ph	BTUs FF*/ICE*	Power Cord	Est. Ship Weight
24" Doors									
RIF2-24	Two Doors	54.88"	35.5"	78.5"	115/230	5.8/5.4	3804/3980	NO	729
RIF3-24	Three Doors	78.88"	35.5"	78.5"	115/230	8.2/8.2	5577/5829	NO	1031
RIF4-24	Four Doors	102.38"	35.5"	78.5"	115/230	10.6/11.1	7173/7500	NO	1333
RIF5-24	Five Doors	126.13"	35.5"	78.5"	115/230	13.1/13.9	8829/9231	NO	1635
30" Doors									
RIF2-30	Two Doors	68.00"	35.5"	78.5"	115/230	6.4/6.9	4653/4873	NO	818
RIF3-30	Three Doors	98.50"	35.5"	78.5"	115/230	8.8/10.1	6550/6866	NO	1160
RIF4-30	Four Doors	128.50"	35.5"	78.5"	115/230	11.4/13.1	8484/8897	NO	1635
RIF5-30	Five Doors	162.00"	35.5"	78.5"	115/230	14.1/17	10450/10961	NO	1980

MODEL NUMBER PREFIX - SC = Self Contained R = Remote
 MODEL NUMBER SUFFIX - W = White B = Black S = Stainless Steel LED = LED lighting
 • Cases are designed to operate at 75 degrees Fahrenheit and 55% relative humidity
 • Cases are equipped with drains; check your local building codes for connection requirements.
 • Specification subject to change without notice
 IF COLORS ARE MIXED AN ADDITIONAL CHARGE WILL APPLY



RIF Endless Design - Glass Door Reach In Freezers - 24" and 30" Doors Standard Specification and Optional Features

CONSTRUCTION

- UL Classified to ANSI/NSF 7
- Heavy Duty Construction
- Foamed in place CFC free foam
- 2, 3, 4, or 5 door models available
- Inset door assembly
- Endless design for continuous line ups

INTERIOR

- White aluminum ends (optional black or stainless steel)
- White back with perforated aluminum (optional black or stainless steel)
- Removable floor pans
- 5 Heavy duty epoxy coated shelves per door white or black

EXTERIOR

- White aluminum ends and front (optional black or stainless steel)
- Double pane glass doors 24" x 63", 30" x 63"
- Black kick plate
- Chrome frame assembly and doors

LIGHTING

- 60" T8 or LED
- 2 Dr = 3 lights or 3 LED strips
- 3 Dr = 4 lights or 4 LED strips
- 4 Dr = 5 lights or 5 LED strips
- 5 Dr = 6 lights or 6 LED strips

ELECTRICAL REQUIREMENTS

- Electric defrost and defrost termination, standard 230V/3ph/60HZ
- ECM fans and lighting - 115V/1ph/60HZ
- Unit must be hard wired
- UL/CUL listed

REFRIGERATION

- R407A expansion valve included
- Condensing unit and other hook ups are NOT INCLUDED
- Coil and fans located below floor plans

OPTIONAL FEATURES

- Door swing change
- Insulated divider for lineups
- Plexiglass divider
- Joint kit
- Temperature control thermostat
- Solenoid valve
- Contactor
- Laminated or painted exterior

Important Note:

All refrigerated cases are designed to operate in an environment of 75 degrees and 55% relative humidity. Product must be cooled before being displayed within the case.

DRAIN IS REQUIRED

Shipping Information

Model No.		RIF2-24 RIF2-24-LED	RIF3-24 RIF3-24-LED	RIF4-24 RIF4-24-LED	RIF5-24 RIF5-24-LED
Shipping Info					
Height		83"	83"	83"	83"
Length		61"	86"	107"	134"
Depth		43"	43"	43"	43"
Gross weight		729	1031	1333	1635
Cubic Feet		125	177	221	276

Model No.		RIF2-30 RIF2-30-LED	RIF3-30 RIF3-30-LED	RIF4-30 RIF4-30-LED	RIF5-30 RIF5-30-LED
Shipping Info					
Height		83"	83"	83"	83"
Length		74"	107"	134"	171"
Depth		43"	43"	43"	43"
Gross weight		818	1160	1635	1980
Cubic Feet		153	221	277	353

RIF Endless Design - Glass Door Reach In Freezers - 24" and 30" Doors Technical Data

Model No. 24" Door model		RIF2-24 RIF2-24-LED	RIF3-24 RIF3-24-LED	RIF4-24 RIF4-24-LED	RIF5-24 RIF5-24-LED
Length		54.88"	78.88"	102.38"	126.13"
Height		78.5"	78.5"	78.5"	78.5"
Depth with drain cover		35.5"	35.5"	35.5"	35.5"
(Dimensions are +/- 1/4")					
Operating temperature		0°F to -15°F	0°F to -15°F	0°F to -15°F	0°F to -15°F
Refrigerant (expansion valve)		R407A	R407A	R407A	R407A
Defrost per day (24hrs)	1 Defrost	1	1	1	1
BTU's at -25°F Evap. Temp. FF*	0°F to -5°F	3840	5577	7173	8829
BTU's at -35°F Evap. Temp. Low*	-5° +F	3980	5829	7500	9231
Voltage		115/230	115/230	115/230	115/230
Amperage 115V, lights and fans		5.8	8.2	10.6	13.1
Amperage 230V, defrost, 3ph		5.4	8.2	11.1	13.9
Cord and plug		NO	NO	NO	NO
Exterior color		W, B, S	W, B, S	W, B, S	W, B, S
Interior color		W, B, S	W, B, S	W, B, S	W, B, S
Inside end panels		W, B, S	W, B, S	W, B, S	W, B, S
Floors - removeable deck pans		W, B, S	W, B, S	W, B, S	W, B, S
Drain required		YES	YES	YES	YES
Door size		23.75" x 62.69"	23.75" x 62.69"	23.75" x 62.69"	23.75" x 62.69"
Shelf (qty) and size		(10) 23.12" x 23"	(15) 23.12" x 23"	(20) 23.12" x 23"	(20) 23.12" x 23"
Model No. 30" Door model		RIF2-30 RIF2-30-LED	RIF3-30 RIF3-30-LED	RIF4-30 RIF4-30-LED	RIF5-30 RIF5-30-LED
Length		68"	98.5"	128.5"	162"
Height		78.5"	78.5"	78.5"	78.5"
Depth with drain cover		35.5"	35.5"	35.5"	35.5"
(Dimensions are +/- 1/4")					
Operating temperature		0°F to -15°F	0°F to -15°F	0°F to -15°F	0°F to -15°F
Refrigerant (expansion valve)		R407A	R407A	R407A	R407A
Defrost per day (24hrs)	1 Defrost	1	1	1	1
BTU's at -25°F Evap. Temp. FF*	0°F to -10°F	4653	6550	8484	10450
BTU's at -35°F Evap. Temp. Low*	-5°F+	4873	6866	8897	10961
Voltage		115/230	115/230	115/230	115/230
Amperage 115V, lights and fans		6.4	8.8	11.4	14.1
Amperage 230V, defrost, 3ph		6.9	10.1	13.1	17.0
Cord and plug		NO	NO	NO	NO
Exterior color		W, B, S	W, B, S	W, B, S	W, B, S
Interior color		W, B, S	W, B, S	W, B, S	W, B, S
Inside end panels		W, B, S	W, B, S	W, B, S	W, B, S
Floors - removeable deck pans		W, B, S	W, B, S	W, B, S	W, B, S
Drain required		YES	YES	YES	YES
Door size		29.75" x 62.69"	29.75" x 62.69"	29.75" x 62.69"	29.75" x 62.69"
Shelf (qty) and size		(10) 29.75" x 23"	(15) 29.75" x 23"	(20) 29.75" x 23"	(25) 29.75" x 23"

Prefix	Suffix
SC = Self Contained	B = Black
R = Remote	W = White
	S = Stainless Steel
	LS = T8 lighting
	LED = LED lighting

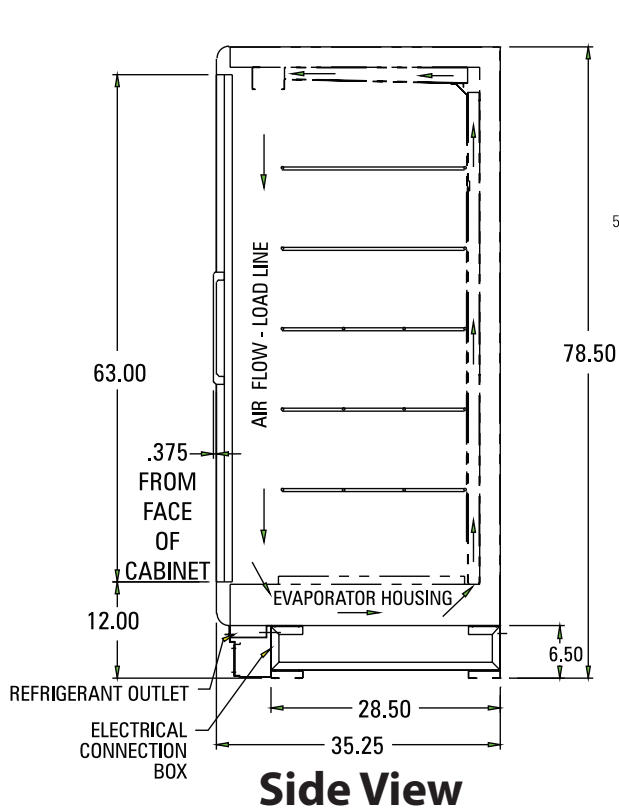
FF* = Frozen Food Temps (0°F to -5°F) Low* = Low Temps (-5°F+)

- Cases are designed to operate at 75 degrees Fahrenheit and 55% relative humidity
- Cases are equipped with drains; check your local building codes for connection requirements.
- Specification subject to change without notice

(ALL WHITE OR ALL BLACK, NO EXTRA CHARGE—
IF COLORS ARE MIXED AN ADDITIONAL CHARGE WILL APPLY)

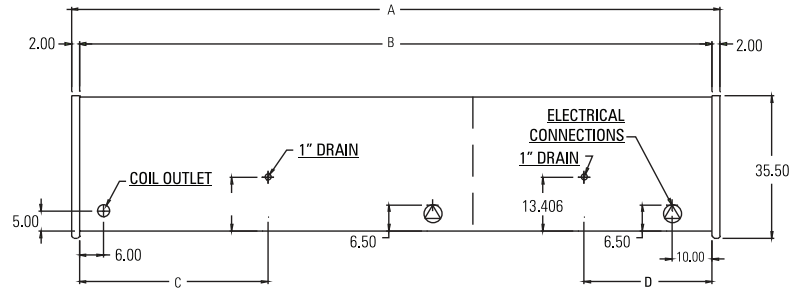
RIF Endless Design - Glass Door Reach In Freezers - 24" and 30" Doors

Technical Data • Side View • Plan View

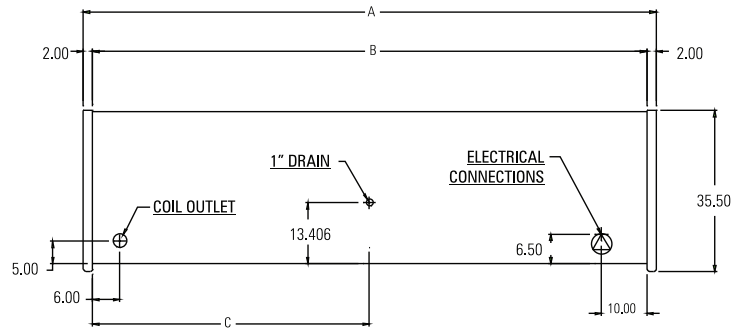


Side View

NOTE:
RIF/RIN5-24 and 5-30 CABINETS ARE A COMBINATION OF
(1) RIF/RIN3 AND (1) RIF/RIN2, MOUNTED TOGETHER
WITH (2) COILS, (2) DRAINS, (2) ELECTRICAL CONNECTIONS

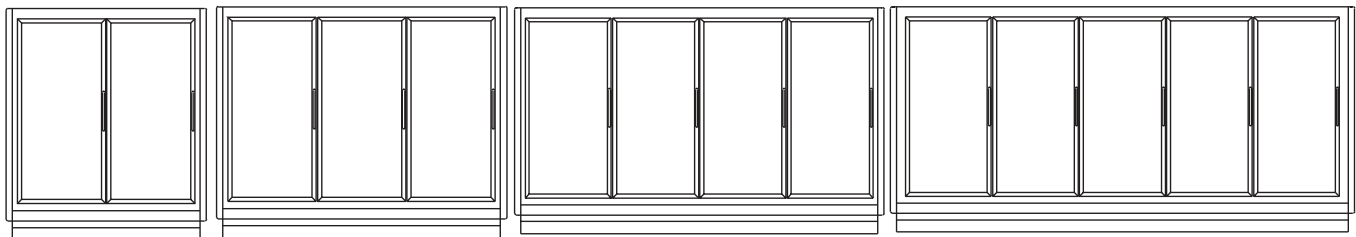
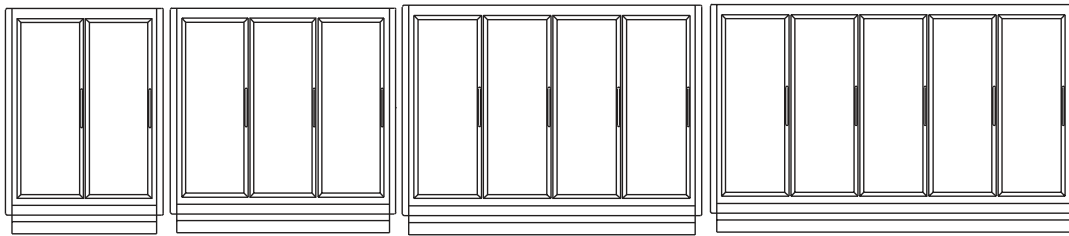


Model	A	B	C	D
RIF/RIN2-30	67-13/16"	63-13/16"	31-15/16"	
RIF/RIN3-30	98-13/16"	94-3/16"	47-1/6"	
RIF/RIN4-30	128-5/8"	124-5/8"	62-15/16"	
RIF/RIN5-30	162"	158"	47-1/16"	31-15/16"



Model	A	B	C
RIF/RIN2-24	54-7/8"	50-7/8"	25-3/16"
RIF/RIN3-24	78-7/8"	74-7/8"	37-1/16"
RIF/RIN4-24	102-3/8"	99-3/8"	48-15/16"
RIF/RIN5-24	126-1/8"	122-1/8"	37-1/6"

Plan Views



Front Views