

# Drop-Ins

Spec Sheet No. DI-1

Job Name \_\_\_\_\_

Item No. \_\_\_\_\_

## Ice Bins

- D-12-IBL
- D-24-IBL
- D-30-IBL
- D-36-IBL
- D-24-IBL-7
- D-30-IBL-7
- D-36-IBL-7



D-24-IBL shown.

**Accessories:**

- Left side cut out for installation in Serving Stations-Model # CUTOUT-L
- Right side cut out for installation in Serving Stations-Model # CUTOUT-R
- Center side cut out for installation in Serving Stations-Model # CUTOUT-C



## Specifications

- **Ice Bin:** 20 gauge 300 series stainless steel.
- **Molding :** Extruded black polyethylene thermal breaker marine edge.
- **Jacket :** 20 gauge galvanized steel.
- **Insulation :** 2 lbs. density, foam in place insulation.
- **Plumbing :** 1" I.P.S. drain, for cold plate units 1/2" I.P.S. drain.
- **Cover :** 20 gauge hinged stainless steel.



Cover for Ice Bin



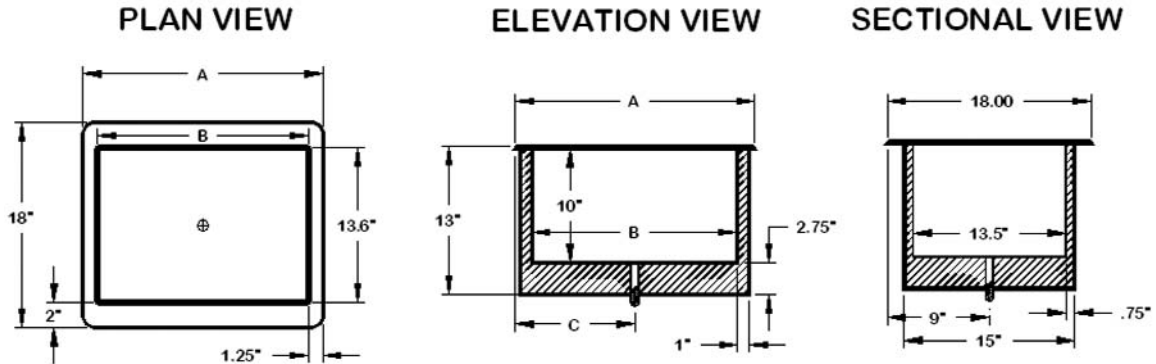
**Supreme Metal**

3125 Trotters Parkway  
Alpharetta, GA 30004  
www.suprememetal.com

Toll Free: 800-645-2526  
770-740-6000  
Fax: 770-740-6010

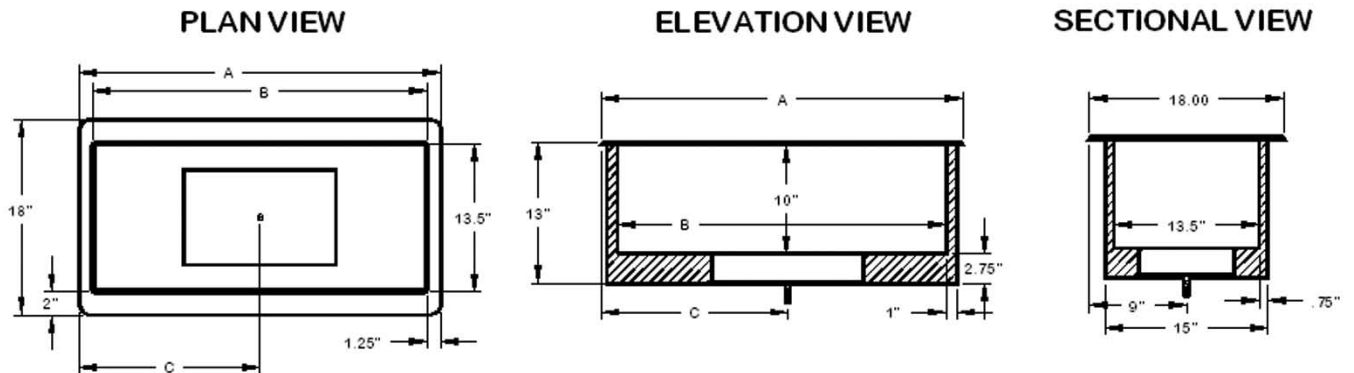
# Drop-Ins

## Drop-In Ice Bins



Model #	Dim A	Dim B	Dim C	Cut-Out Size	Ship Wgt.	Ice Capacity
D-12-IBL	12"	8"	6"	15.375" x 9.25"	22 lbs.	23 lbs.
D-24-IBL	21.25"	18"	10.625"	20.375" x 15.25"	35 lbs.	50 lbs.
D-30-IBL	27.25"	24"	13.625"	26.375" x 15.25"	42 lbs.	62 lbs.
D-36-IBL	33.25"	30"	16.625"	32.375" x 15.25"	48 lbs.	75 lbs.

## Drop-In Ice Bins with 7 Circuit Cold Plates



Model #	Dim A	Dim B	Dim C	Cut-Out Size	Ship Wgt.	Ice Capacity
D-24-IBL-7	21.25"	18"	10.625"	20.375" x 15.25"	70 lbs.	50 lbs.
D-30-IBL-7	27.25"	24"	13.625"	26.375" x 15.25"	77 lbs.	62 lbs.
D-36-IBL-7	33.25"	30"	16.625"	32.375" x 15.25"	83 lbs.	75 lbs.

Toll Free: 800-645-2526  
 770-740-6000  
 Fax: 770-740-6010

3125 Trotters Parkway  
 Alpharetta, GA 30004  
[www.suprememetal.com](http://www.suprememetal.com)

We reserve the right to modify specifications in line with our policy of continuous product improvement.

© Supreme Metal 2005.  **Supreme Metal**