

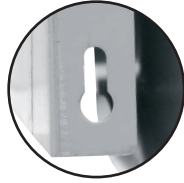


STAINLESS STEEL
HAND SINKS
SPECIAL PURPOSE



Conforms To NSF 61/9 Lead Free Requirements

Keyhole Bracket for easier installation and greater stability.



Item #: _____ Qty #: _____
 Model #: _____
 Project #: _____



7-PS-72



7-PS-64



7-PS-727
 CLASS 1 SECURITY
 INSTALLATION



7-PS-747
 CLASS 2 SECURITY
 INSTALLATION



FEATURES:

One piece **Deep Drawn** sink bowl design. Sink bowl is 10" x 14" x 5".

All sink bowls have a large liberal radii with a minimum dimension of 2" and are rectangular in design for increased capacity.

Keyhole wall mount bracket.

Stainless steel basket drain 1-1/2" IPS.

Splash mounted 4" O.C. gooseneck faucet furnished with aerator.

Specific Features:

7-PS-55 features eye wash faucet attachment.

7-PS-64 features tubular support brackets.

7-PS-72 is H.A.C.C.P. compliant hand sink featuring slow, self-closing, metering faucet with mixing valve.

7-PS-727 Unit totally enclosed. Bottom security panel provides access for installation and services. Vandal Proof Aerators. All fasteners are stainless steel tamper proof. Concealed drain. Heavy duty gooseneck faucet. Towel dispenser with hinged towel box with lock. Unit uses standard C-fold towels. Liquid Soap dispenser.

7-PS-747 Unit totally enclosed. Bottom security panel provides access for installation and services. Vandal Proof Aerators. All fasteners are stainless steel tamper proof. Concealed drain. Heavy duty gooseneck faucet.

CONSTRUCTION:

All TIG welded.

Welded areas blended to match adjacent surfaces and to a satin finish.

Die formed Countertop Edge with a 3/8" No-Drip offset.

One sheet of stainless steel - No Seams.

MATERIAL:

Heavy gauge type 304 series stainless steel.

Wall mounting bracket is galvanized and of offset design.

All fittings are brass / chrome plated unless otherwise indicated.

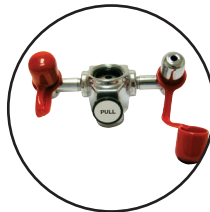
MECHANICAL:

Faucet supply is 1/2" IPS male thread hot and cold.

WARNING:

Equipment that includes a faucet may expose you to chemicals, including lead, that are known to the State of California to cause cancer or birth defects or other reproductive harm. For more Info., visit www.p65warnings.ca.gov.

7-PS-55



IMPORTANT: Faucet-mounted eyewashes require two motions to operate (turn on water, pull knob to activate eyewash flow). Therefore, **Advance Tabco does not believe that these units meet the provisions of ANSI Z358.1-2004 as eyewash units.** These units are intended solely as supplemental units in addition to dedicated, plumbed eyewash equipment installed in the workplace.

Faucet-mounted eyewashes should be used with cold or warm water only. Use of hot water might cause scalding.

Eyewash Faucets not to be used with Electronic Faucets.



Customer Service Available To Assist You **1-800-645-3166** 8:30 am - 8:00 pm E.S.T.

For Orders & Customer Service:

Email: customer@advancetabco.com or Fax: 631-242-6900

For Smart Fabrication™ Quotes:

Email: smartfab@advancetabco.com or Fax: 631-586-2933

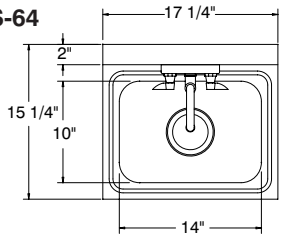
DIMENSIONS and SPECIFICATIONS

TOL Overall: ± .500" Interior: ± .250"

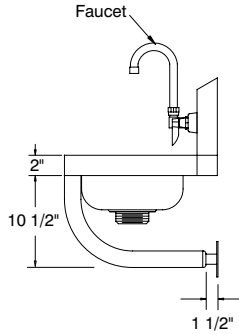
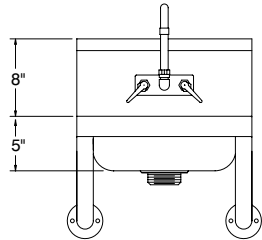
FITTINGS SUPPLIED AS SHOWN

ALL DIMENSIONS ARE TYPICAL

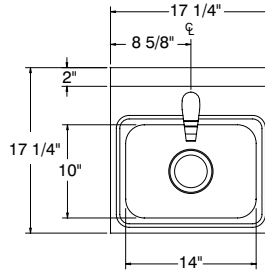
7-PS-64



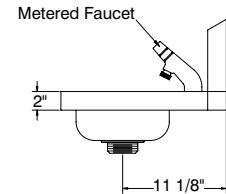
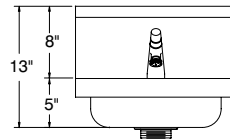
25 lbs.



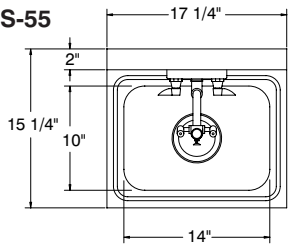
7-PS-72



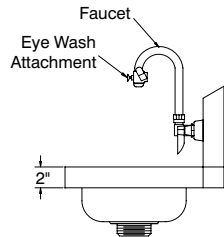
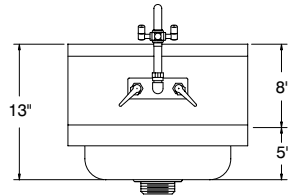
15 lbs.



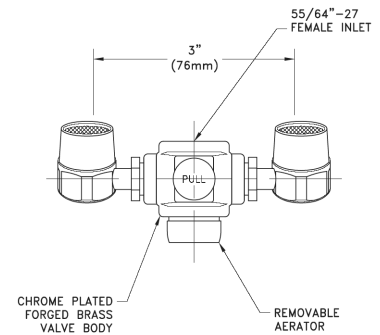
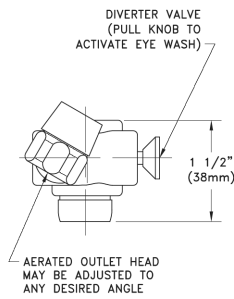
7-PS-55



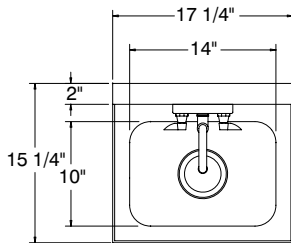
15 lbs.



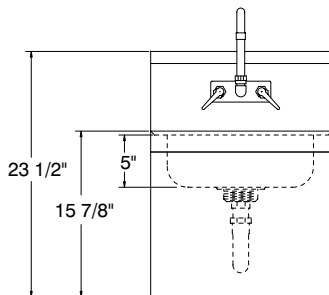
EYE WASH DETAIL



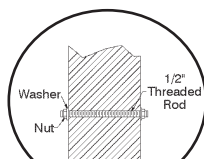
7-PS-747



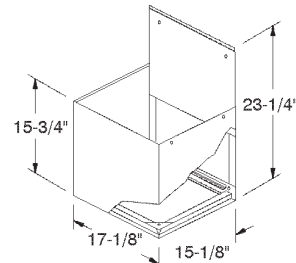
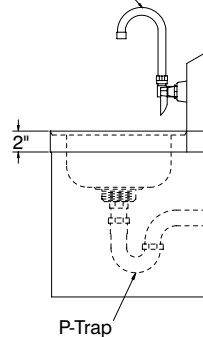
45 lbs.



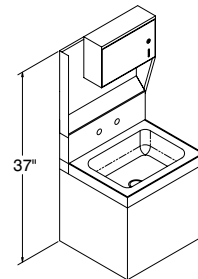
Mounting Detail



Faucet



Security Skirt Enclosure



7-PS-727
Unit with Towel Dispenser

