

35 Series Service Case Double Duty - Fish and Poultry



Remote Model

Model No.	Description	Length	Depth	Height	Voltage	Amps	HP/BTUs	Power Cord	Est. Ship Weight
SC-CFS35-4-LED	Self-contained	50"	37.5"	52"	115	12.0	1/4	YES	500
SC-CFS35-6-LED	Self-contained	71"	35.5"	52"	115	12.0	1/4	YES	645
SC-CFS35-8-LED	Self-contained	95"	35.5"	52"	115	16.0	1/3	YES	900
SC-CFS35-10-LED	Self-contained	119"	35.5"	52"	115	9.9	1/3	NO	1230
SC-CFS35-12-LED	Self-contained	143"	35.5"	52"	115	13.8	1/2	NO	1344
R-CFS35-4-LED	Remote	50"	37.5"	52"	115	0.8	820	NO	460
R-CFS35-6-LED	Remote	71"	35.5"	52"	115	1.3	1230	NO	595
R-CFS35-8-LED	Remote	95"	35.5"	52"	115	1.6	1640	NO	845
R-CFS35-10-LED	Remote	119"	35.5"	52"	115	2.4	2050	NO	1175
R-CFS35-12-LED	Remote	143"	35.5"	52"	115	2.4	2460	NO	1295

MODEL NUMBER PREFIX - SC = Self-contained R = Remote
 MODEL NUMBER SUFFIX - W = White B = Black S = Stainless Steel LED = LED - lighting
 • Cases are designed to operate at 75 degrees Fahrenheit and 55% relative humidity
 • Cases are equipped with drains; check your local building codes for connection requirements.
 • Specification subject to change without notice
 IF COLORS ARE MIXED AN ADDITIONAL CHARGE WILL APPLY



35 Series Service Case Double Duty - Fish and Poultry

Standard Specifications and Optional Features

CONSTRUCTION

- UL - Classified to ANSI/NSF 7
- Foamed in place CFC free foam
- Thermal insulated front glass - 26" H
- Heavy gauge steel super structure
- Bottom storage
- Drain is included for cleaning

INTERIOR

- White, black or stainless steel ends
- White aluminum floor (bottom storage area)
- Air insulated baffle (prevents moisture from dripping into display area)
- Stainless steel individual ice pan

EXTERIOR

- Double pane rear removable doors
- Rear compression door jamb
- Removable front grille allows for cleaning
- Removable rear grille for easy servicing
- 1" Front bumper

FINISHES

- White, black or stainless steel front and ends
- Stainless steel mirror trim
- Stainless steel heavy gauge top - 17.325" W
- Bottom rear is designer white, black or stainless steel aluminum

LIGHTING

- 2 rows of lighting at top of unit

ELECTRICAL REQUIREMENTS

- 115V 4', 6', & 8' with power cord
- Unit must be hard wired, 10' & 12' only
- UL/CUL listed
- 115V-5AMP general purpose receptacle (wired separately) 10' & 12' only

REFRIGERATION

- Copevap system (eliminates need for condensate pan)
- Self-contained - R513A expansion valve system
- Remote - R407A expansion valve system
- Gravity coil located at inside top of unit
- Automatic defrost electronically controlled (Self-contained units only)
- Electronically control maintains constant temperatures
- Remotes available

OPTIONS

- Scale stand
- Paper cutter
- Stainless steel, laminate, or paint
- Mirrored doors
- Stainless steel mezzanine shelf
- Drop work shelf
- 2" Front bumper
- Door lock
- Digital thermometer
- Pass thru front doors 4', 6', 8' only

Important Note:

All refrigerated cases are designed to operate in an environment of 75 degrees and 55% relative humidity. Product must be cooled before being displayed within the case.

DRAIN IS REQUIRED

35 Series Service Case Double Duty - Fish and Poultry Technical Data

Model No.	SC R	SC-CFS35-4-LED R-CFS35-4-LED	SC-CFS35-6-LED R-CFS35-6-LED	SC-CFS35-8-LED R-CFS35-8-LED	SC-CFS35-10-LED R-CFS35-10-LED	SC-CFS35-12-LED R-CFS35-12-LED
Length		50"	71"	95"	119"	143"
Height		52"	52"	52"	52"	52"
Depth		35.5"	35.5"	35.5"	35.5"	35.5"
Depth with bottom door		37.5"				
(Dimensions are +/- 1/4")						
Operating temperature		38°F to 40°F	38°F to 40°F	38°F to 40°F	38°F to 40°F	38°F to 40°F
Refrigerant (exp. valve)	SC	R513A	R513A	R513A	R513A	R513A
Refrigerant (exp. valve)	R	R407A	R407A	R407A	R407A	R407A
Compressor size HP	SC	1/4	1/4	1/3	1/3	1/2
Defrost per day (24 hours)	Air Defrost	1 per day	1 per day	1 per day	1 per day	1 per day
BTU's at +20°F Evap. Temp.	R	820	1230	1640	2050	2460
Voltage	SC	115	115	115	115	115
Amperage	SC	6	6.4	9.1	9.9	13.8
Remote Voltage	R	115	115	115	115	115
Amperage, lights only	R	.8	1.3	1.6	2.4	2.4
Cord and plug	SC	YES	YES	YES	NO	NO
	R	NO	NO	NO	NO	NO
Exterior color		W, B, S	W, B, S	W, B, S	W, B, S	W, B, S
Interior color		W, B, S	W, B, S	W, B, S	W, B, S	W, B, S
Inside end panels		W, B, S	W, B, S	W, B, S	W, B, S	W, B, S
Floors		W, B, S	W, B, S	W, B, S	W, B, S	W, B, S
# of top doors		2	2	4	4	4
Door size		19.56" x 19.25"	29.81" x 19.25"	19.56" x 19.25"	23.81" x 19.25"	29.81" x 19.25"
# of bottom doors	SC	1 external	2	2	23	4
	R	2	2	2	4	4
# of coils		1	1	1	1	1
Bottom storage		YES	YES	YES	YES	YES
Front glass		26" x 45"	26" x 66"	26" x 90"	26" x 114"	26" x 138"
Cubic capacity		30	45	60	75	90
Mezzanine shelf		Optional	Optional	Optional	Optional	Optional
Shipping Info						
Height		58"	58"	58"	58"	58"
Depth		44"	44"	44"	44"	44"
Length		61"	87"	109"	135"	157"
Gross weight SC/R		500/460	645/595	900/845	1230/1175	1344/1295
Cubic feet		90	128	160	200	231

(ALL WHITE OR ALL BLACK, NO EXTRA CHARGE—IF COLORS ARE MIXED AN ADDITIONAL CHARGE WILL APPLY)

Prefix

SC = Self-contained
R = Remote

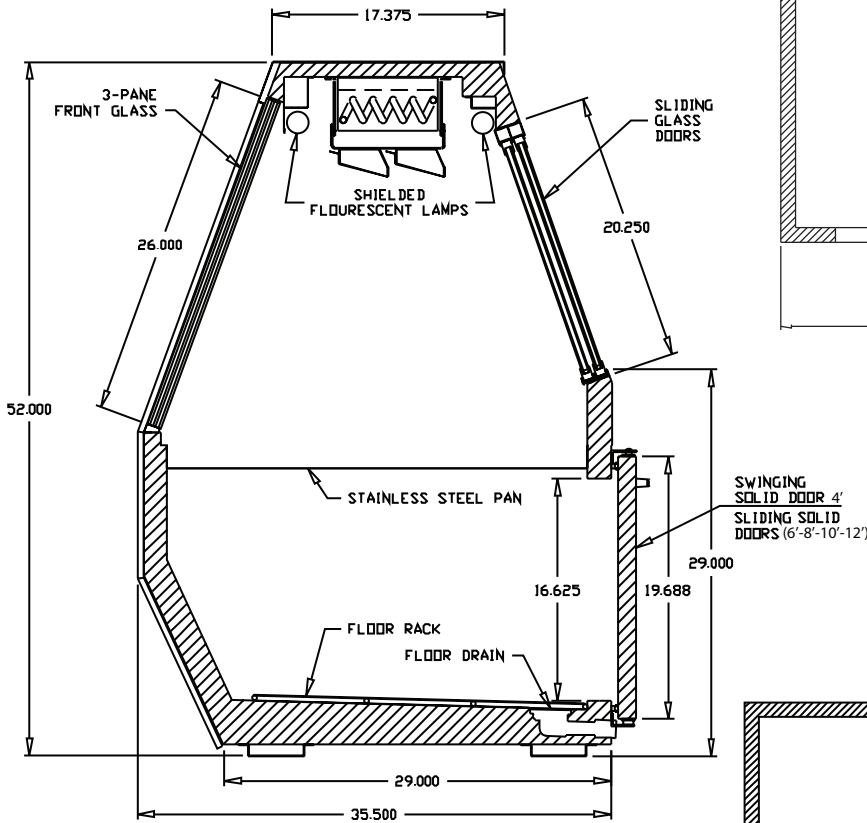
Suffix

B = Black
W = White
S = Stainless Steel
LED = LED lighting

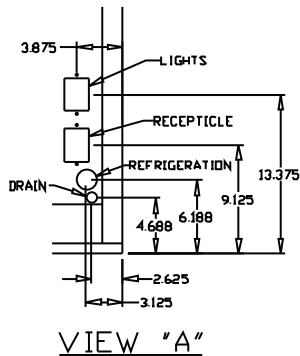
- Cases are designed to operate at 75 degrees Fahrenheit and 55% relative humidity
- Cases are equipped with drains; check your local building codes for connection requirements.
- Specification subject to change without notice

35 Series Service Case Double Duty - Fish and Poultry

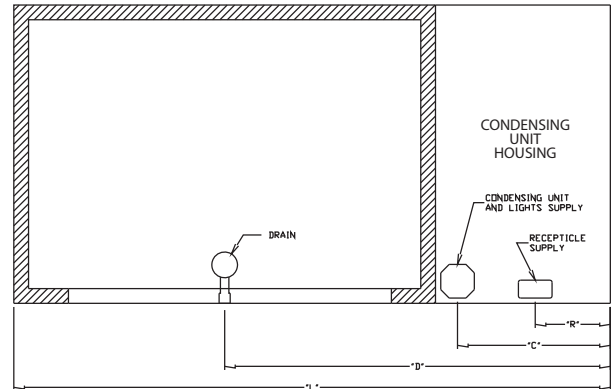
Technical Data • Side View • Plan View



Cross Section

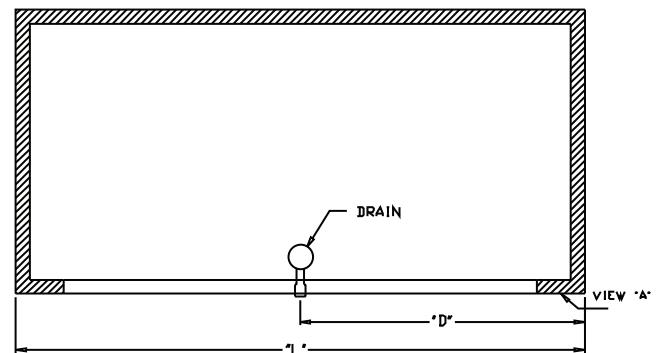


VIEW "A"



SIZE	"L"	"R"	"C"	"D"
4	50	25	25	33
6	71	9	18.250	45.875
8	95	9	18.250	57.875
10	119	9	18.250	69.875
12	143	9	18.250	81.875

Plan View Self-contained



SIZE	"L"	"D"
4	50	25
6	71	35.500
8	95	47.500
10	119	59.500
12	143	61.500

Plan View Remote