

RIN Endless Design - Glass Door Reach In Refrigerators - 24" and 30" Doors



Model No.	Power Description	Est. Ship Length	Depth	Height	Voltage	Amps	BTUs	Cord	Weight
24" Doors									
RIN2-24	Two Door	54.88"	35.5"	78.5"	115	4.1	2473	NO	568
RIN3-24	Three Door	78.88"	35.5"	78.5"	115	5.6	3471	NO	832
RIN4-24	Four Door	102.38"	35.5"	78.5"	115	7.3	4481	NO	1096
RIN5-24	Five Door	126.13"	35.5"	78.5"	115	9.0	5522	NO	1360
30" Doors									
RIN2-30	Two Door	68.00"	35.5"	78.5"	115	4.2	2840	NO	680
RIN3-30	Three Door	98.50"	35.5"	78.5"	115	5.9	4064	NO	1000
RIN4-30	Four Door	128.50"	35.5"	78.5"	115	7.6	5206	NO	1360
RIN5-30	Five Door	162.00"	35.5"	78.5"	115	8.7	6439	NO	1700

MODEL NUMBER PREFIX - SC = Self Contained R = Remote
 MODEL NUMBER SUFFIX - W = White B = Black S = Stainless Steel LED = LED lighting
 • Cases are designed to operate at 75 degrees Fahrenheit and 55% relative humidity
 • Cases are equipped with drains; check your local building codes for connection requirements.
 • Specification subject to change without notice
 IF COLORS ARE MIXED AN ADDITIONAL CHARGE WILL APPLY



RIN Endless Design - Glass Door

Reach In Refrigerators - 24" and 30" Doors

Standard Specification and Optional Features

CONSTRUCTION

- UL Classified to ANSI/NSF 7
- Heavy Duty Construction
- Foamed in place CFC free foam
- 2, 3, 4, or 5 Door models available
- Inset door assembly
- Endless design for continuous line ups

INTERIOR

- White, black or stainless steel aluminum ends
- Perforated aluminum back
- Removable floor pans
- 5 Heavy duty epoxy coated shelves per door white or black

EXTERIOR

- White aluminum ends and front (optional black or stainless steel)
- Double pane glass doors 24" x 63", 30" x 63"
- Black kick plate
- Chrome frame assembly and doors

LIGHTING

- 60" T8 or LED
- 2 Dr = 3 lights or 3 LED strips
- 3 Dr = 4 lights or 4 LED strips
- 4 Dr = 5 lights or 5 LED strips
- 5 Dr = 6 lights or 6 LED strips

ELECTRICAL REQUIREMENTS

- ECM Fans and lighting - 115V
- Unit must be hard wired
- UL/CUL listed

REFRIGERATION

- R407A expansion valve Included
- Condensing unit and other hook ups are not included
- Coil and fans located below floor plans

OPTIONAL FEATURES

- Door swing change
- Insulated divider for lineups
- Plexiglass divider
- Joint kit
- Temperature control thermostat
- Solenoid valve
- Contactor
- Laminated or painted exterior

Important Note:

All refrigerated cases are designed to operate in an environment of 75 degrees and 55% relative humidity. Product must be cooled before being displayed within the case.

DRAIN IS REQUIRED

Shipping Information

Model No.		RIN2-24 RIN2-24-LED	RIN3-24 RIN3-24-LED	RIN4-24 RIN4-24-LED	RIN5-24 RIN5-24-LED
Shipping Info					
Height		83"	83"	83"	83"
Length		61"	86"	107"	134"
Depth		43"	43"	43"	43"
Gross weight lbs.		568	832	1096	1360
Cubic Feet		125	177	221	276

Model No.		RIN2-30 RIN2-30-LED	RIN3-30 RIN3-30-LED	RIN4-30 RIN4-30-LED	RIN5-30 RIN5-30-LED
Shipping Info					
Height		83"	83"	83"	83"
Length		74"	107"	134"	171"
Depth		43"	43"	43"	43"
Gross weight lbs.		680	1000	1360	1700
Cubic Feet		153	221	277	353

RIN Endless Design - Glass Door Reach In Refrigerators - 24" and 30" Doors

Technical Data

Model No. 24" Door model	RIN2-24 RIN2-24-LED	RIN3-24 RIN3-24-LED	RIN4-24 RIN4-24-LED	RIN5-24 RIN5-24-LED
Length	54.88"	78.88"	102.38"	126.13"
Height	78.5"	78.5"	78.5"	78.5"
Depth with drain cover	35.5"	35.5"	35.5"	35.5"
(Dimensions are +/- 1/4") Operating temperature	36°F to 40°F	36°F to 40°F	36°F to 40°F	36°F to 40°F
Refrigerant (expansion valve)	R407A	R407A	R407A	R407A
BTU's at +20°F Evap. Temp.	2473	3471	4481	5522
Voltage	115	115	115	115
Amperage, lights and fans	4.1	5.6	7.3	9.0
Cord and plug	NO	NO	NO	NO
Exterior color	W, B, S	W, B, S	W, B, S	W, B, S
Interior color	W, B, S	W, B, S	W, B, S	W, B, S
Inside end panels	W, B, S	W, B, S	W, B, S	W, B, S
Floors - removeable deck pans	W, B, S	W, B, S	W, B, S	W, B, S
Drain required	YES	YES	YES	YES
Door size	23.75" x 62.69"	23.75" x 62.69"	23.75" x 62.69"	23.75" x 62.69"
Total shelves	10	15	20	25
Shelf size	(10) 23.12" x 23"	(15) 23.12" x 23"	(20) 23.12" x 23"	(25) 23.12" x 23"

Model No. 30" Door model	RIN2-30 RIN2-30-LED	RIN3-30 RIN3-30-LED	RIN4-30 RIN4-30-LED	RIN5-30 RIN5-30-LED
Length	68.0"	98.5"	128.5"	162"
Height	78.5"	78.5"	78.5"	78.5"
Depth with drain cover	35.5"	35.5"	35.5"	35.5"
(Dimensions are +/- 1/4") Operating temperature	36°F to 40°F	36°F to 40°F	36°F to 40°F	36°F to 40°F
Refrigerant (expansion valve)	R407A	R407A	R407A	R407A
BTU's at +20°F Evap. Temp.	2840	4064	5206	6439
Voltage	115	115	115	115
Amperage, lights and fans	4.2	5.9	7.6	8.7
Cord and plug	NO	NO	NO	NO
Exterior color	W, B, S	W, B, S	W, B, S	W, B, S
Interior color	W, B, S	W, B, S	W, B, S	W, B, S
Inside end panels	W, B, S	W, B, S	W, B, S	W, B, S
Floors - removeable deck pans	W, B, S	W, B, S	W, B, S	W, B, S
Drain required	YES	YES	YES	YES
Door Size	29.75" x 62.69"	29.75" x 62.69"	29.75" x 62.69"	29.75" x 62.69"
Total Shelves	10	15	20	25
Shelf size	(10) 29.75" x 23"	(15) 29.75" x 23"	(20) 29.75" x 23"	(25) 29.75" x 23"

Prefix

SC = Self Contained
R = Remote

Suffix

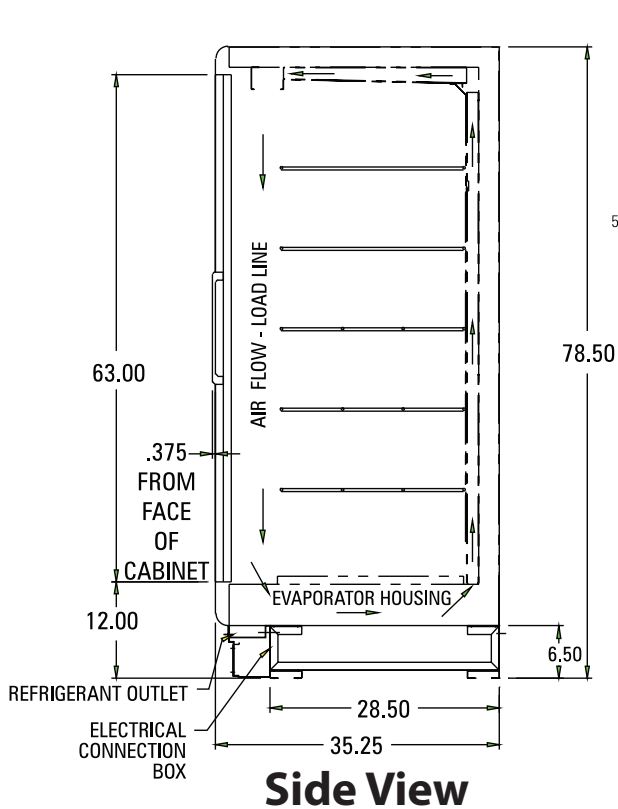
B = Black
W = White
S = Stainless Steel
LS = T8 lighting
LED = LED lighting

- Cases are designed to operate at 75 degrees Fahrenheit and 55% relative humidity
- Cases are equipped with drains; check your local building codes for connection requirements.
- Specification subject to change without notice

(ALL WHITE OR ALL BLACK, NO EXTRA CHARGE—
IF COLORS ARE MIXED AN ADDITIONAL CHARGE WILL APPLY)

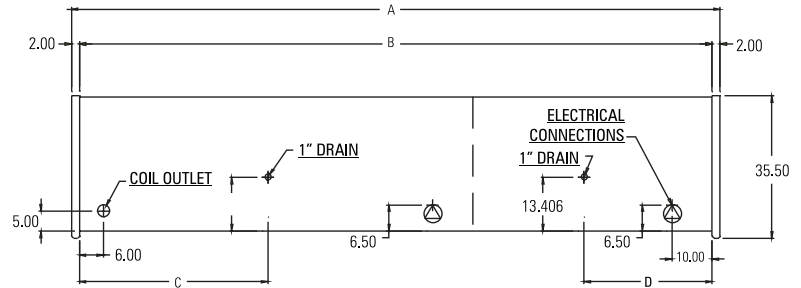
RIN Endless Design - Glass Door Reach In Refrigerators - 24" and 30" Doors

Technical Data • Side View • Plan View

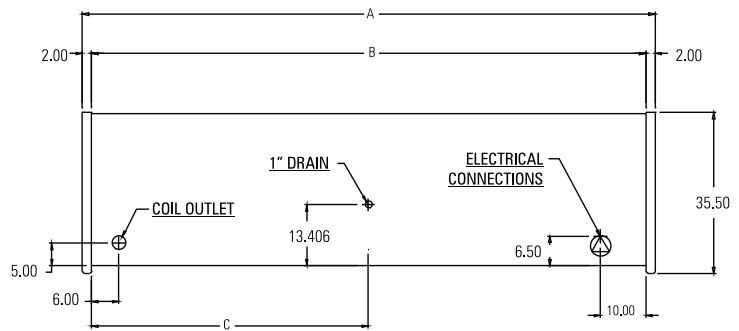


Side View

NOTE:
RIF/RIN5-24 and 5-30 CABINETS ARE A COMBINATION OF
(1) RIF/RIN3 AND (1) RIF/RIN2, MOUNTED TOGETHER
WITH (2) COILS, (2) DRAINS, (2) ELECTRICAL CONNECTIONS

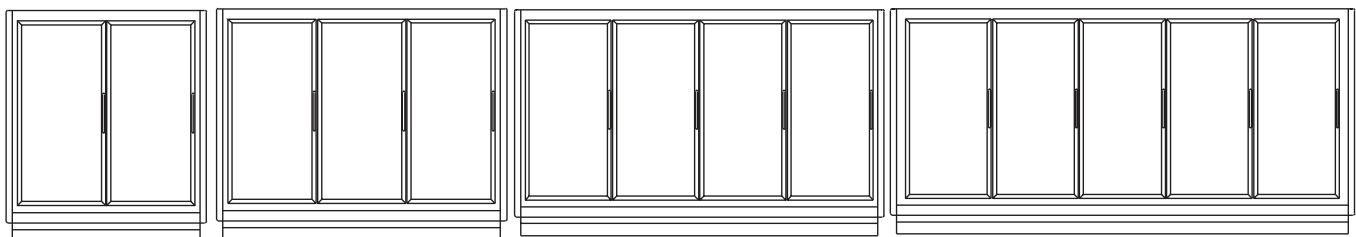
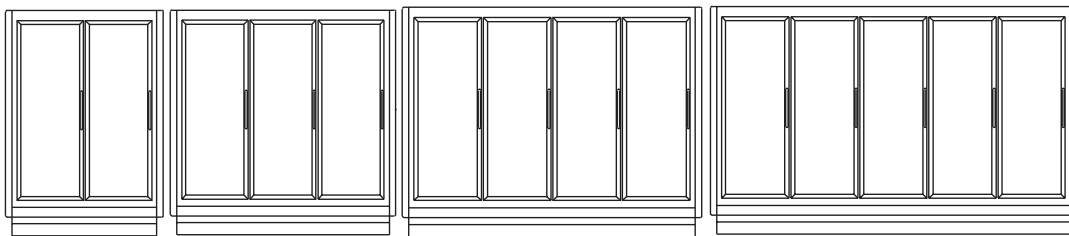


Model	A	B	C	D
RIF/RIN2-30	67-13/16"	63-13/16"	31-15/16"	
RIF/RIN3-30	98-13/16"	94-3/16"	47-1/6"	
RIF/RIN4-30	128-5/8"	124-5/8"	62-15/16"	
RIF/RIN5-30	162"	158"	47-1/16"	31-15/16"



Model	A	B	C
RIF/RIN2-24	54-7/8"	50-7/8"	25-3/16"
RIF/RIN3-24	78-7/8"	74-7/8"	37-1/16"
RIF/RIN4-24	102-3/8"	99-3/8"	48-15/16"
RIF/RIN5-24	126-1/8"	122-1/8"	37-1/6"

Plan Views



Front Views