



Item # _____

Job _____

METRO MOBILE OVAL TRAY RACK

- **Material:** Special design, natural finish, high-strength, extruded aluminum 96063-T6 alloy) framework with 8-gauge brake-formed slides.
- **Rugged:** Double-riveted aircraft construction throughout . . . built to last.
- **Pass-thru Design:** Can be loaded on one side and unloaded from the other for maximum efficiency and convenience.
- **Sanitary:** Easy to clean.
- **Lightweight:** Maneuvers easily.
- **Space Saving**
- **Ideal for Banquet Service**



RD27N



Racks Model RD27N



InterMetro Industries Corporation
North Washington Street
Wilkes-Barre, PA 18705
www.metro.com

Copyright © 2000 InterMetro Industries Corp.

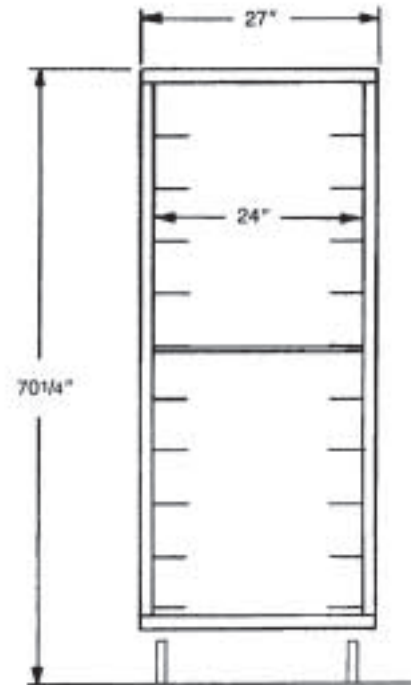
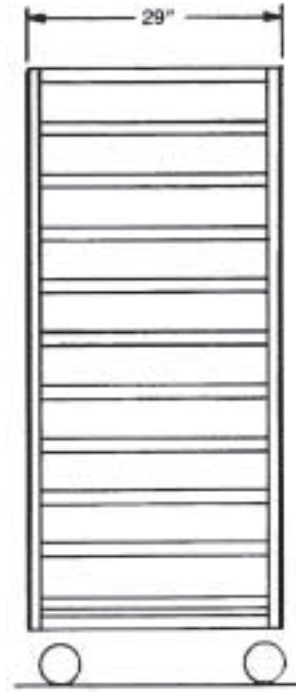
13.58



METRO MOBILE OVAL TRAY RACK

Specifications

- **Material:** Special design, natural finish, high-strength, extruded aluminum (6063-T6 alloy).
- **Construction:** Pass-thru design, aircraft-riveted construction throughout.
- **Corner Posts:** 1 1/2" x 1 1/2" x 1/8" (38 x 38 x 3mm) angle-shape.
- **Top & Bottom:** 1 1/2" x 1 1/2" x 1/8" (38 x 38 x 3mm) angle-shape riveted to four corner posts.
- **Casters:** Two B5DN on back—5" (127mm) double ball bearing swivel, ball bearing axle, nickel-plated, donut neoprene-tired, prelubricated, bolted to full-length, 14-gauge channel to bottom frame. Two B5DNB on front— same as above with wheel brake.
- **Slides:** Special design 5" (127mm)-wide slide fabricated from high-strength, .125 (3mm) aluminum, double-riveted to corner posts.
- **Load Rating:** 20 lbs. (9 kg) per level, not to exceed 350 lbs. (159 kg) per unit.



Dimensions

Cat. No.	Height		Width		Depth		Slide Spacing		Pan Capacity		Shipping Weight	
	(in.)	(mm)	(in.)	(mm)	(in.)	(mm)	(in.)	(mm)	No.	Size(in.)	(lbs.)	(Kg)
RD27N	70 1/4	1785	27	685	29	735	6	152	10	22 3/4 x 27 5/8	88	40

Accessories

Model	Description
A33RD	Gray Continuous Bumper
A37	Gray Corner Bumpers
A71	Floor Lock
A120	Pan Stop

Manufactured by:



InterMetro Industries Corporation
 North Washington Street, Wilkes-Barre, PA 18705
 Phone: 570-825-2741 • Fax: 570-825-2852
 For Product Information Call: 1-800-433-2232
 Visit Our Web Site: www.metro.com

L02-079
 Rev. 9/00
 Printed in U.S.A.

Information and specifications are subject to change without notice. Please confirm at time of order.

