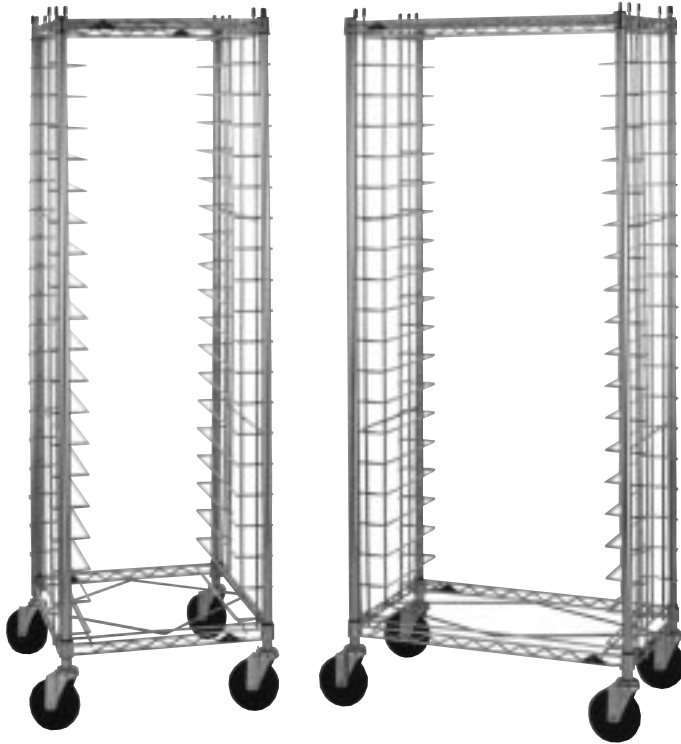




Item# _____

Job _____



METRO MOBILE END- AND SIDE-LOAD WIRE BUN PAN RACKS

- **Cost Effective:** Metro's Bun Pan Racks offer an economical solution for sturdy, dependable storage and transport of bun pans.
- **Two Styles Available:** End-load models allow for optimum floor space utilization, while side-load models offer a larger tray landing area. Both styles can be loaded on one side and unloaded from the other for maximum efficiency and convenience.
- **Choice of Slide Spacing:** Each style is available with a choice of slide spacings — 1½" (38mm), which has a 38 pan capacity, and 3" (76mm), which has a 20 pan capacity.
- **UPS Shippable** in one box for lower freight costs.
- **Quick, Secure Assembly:** Units assemble quick and easy without special tools.
- **Lightweight, Maneuverable:** 5" (127mm) swivel casters promote ease of mobility.
- **Super Erecta Brite™ Finish**



End- and Side-Load Wire Bun Pan Racks

13.42



InterMetro Industries Corporation
North Washington Street
Wilkes-Barre, PA 18705
www.metro.com

Job _____

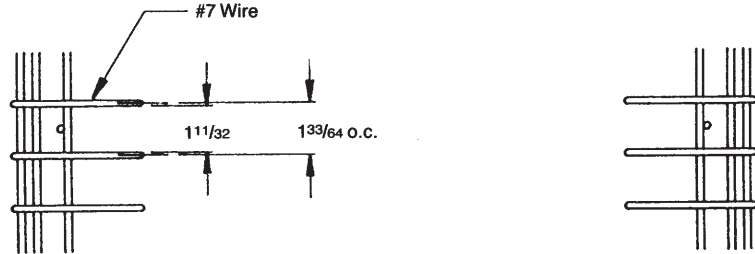


METRO MOBILE
 END- AND SIDE-LOAD
 WIRE BUN PAN RACKS

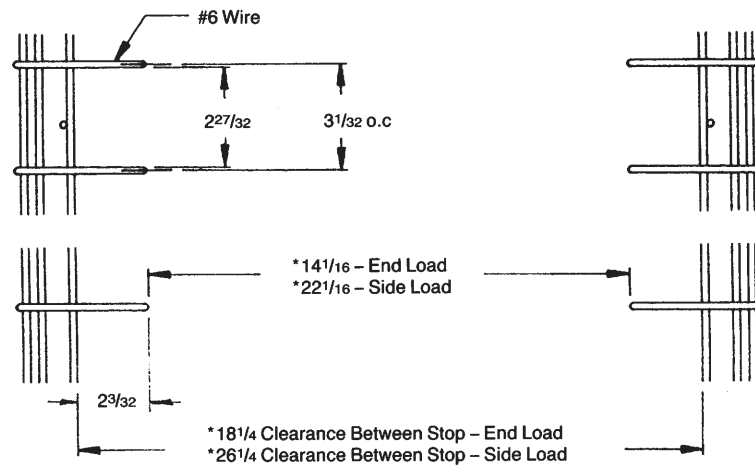
SPECIFICATIONS:

- **Slides, Frame, Posts:** Super Erecta Brite™ finish with Metrolac protective coating.
- **Casters:** 5" (127mm) stem/swivel casters with resilient tread.

RE1/RS1 Slide Spacing



RE3/RS3 Slide Spacing



*Dimensions are for an unloaded cart.
 Cart designed for bottom loading 18" x 26" bun pans.
 200 lb. unit wt. capacity with up to 30 lb. on any one level.

DIMENSIONS:

| Model No. | Description | Height | | Width | | Length | | Slide Spacing | | Pan Capacity | | Approx. Pkd. Wt. | |
|-----------|-------------|--------|------|--------------------------------|------|--------|------|-------------------------------|------|--------------|------------|------------------|------|
| | | (in.) | (mm) | (in.) | (mm) | (in.) | (mm) | (in.) | (mm) | No. | Size (in.) | (lbs.) | (kg) |
| RE1 | End-Load | 69 | 1750 | 21 ³ / ₄ | 550 | 27 | 685 | 1 ¹ / ₂ | 40 | 38 | 18x26 | 61 | 28 |
| RE3 | End-Load | 69 | 1750 | 21 ³ / ₄ | 550 | 27 | 685 | 3 | 75 | 20 | 18x26 | 70 | 32 |
| RS1 | Side-Load | 69 | 1750 | 19 ¹ / ₂ | 490 | 30 | 760 | 1 ¹ / ₂ | 40 | 38 | 18x26 | 61 | 28 |
| RS3 | Side-Load | 69 | 1750 | 19 ¹ / ₂ | 490 | 30 | 760 | 3 | 75 | 20 | 18x26 | 70 | 32 |

ACCESSORIES:

| Model No. | Description |
|-----------|--|
| 9992DB | 3 ¹ / ₂ " (90mm) Diameter Rubber Donut Bumper |
| 9992N | 5 ¹ / ₂ " (140mm) Diameter Rubber Donut Bumper |

Manufactured by:
InterMetro Industries Corp.
 North Washington Street
 Wilkes-Barre, PA 18705
 www.metro.com

Phone 570-825-2741
 FAX 570-825-2852
 For Product Information, call 1-800-433-2232
 For Customer Service, call 1-800-992-1776



InterMetro Industries Corporation
 North Washington Street
 Wilkes-Barre, PA 18705
 www.metro.com

L02-074
 5/99 BJ
 Printed in U.S.A.
 Information and specifications are subject to change
 without notice. Please confirm at time of order.